

1st Floor Sq.Ft. Shown Below
 559 Square Feet of which
 523 S.F. is Living Space
 36 S.F. is Stoop Space
 (Architect's Estimate)

Mary

(F1)

Breakfast Rm
 9'-10" x 8'-9"

Std./Dbl Window
 Opt. Triple Window

Std. Single Window
 Opt. French Doors

Kitchen
 8'-5" x 8'-9"

Fridge
 Hook-Up

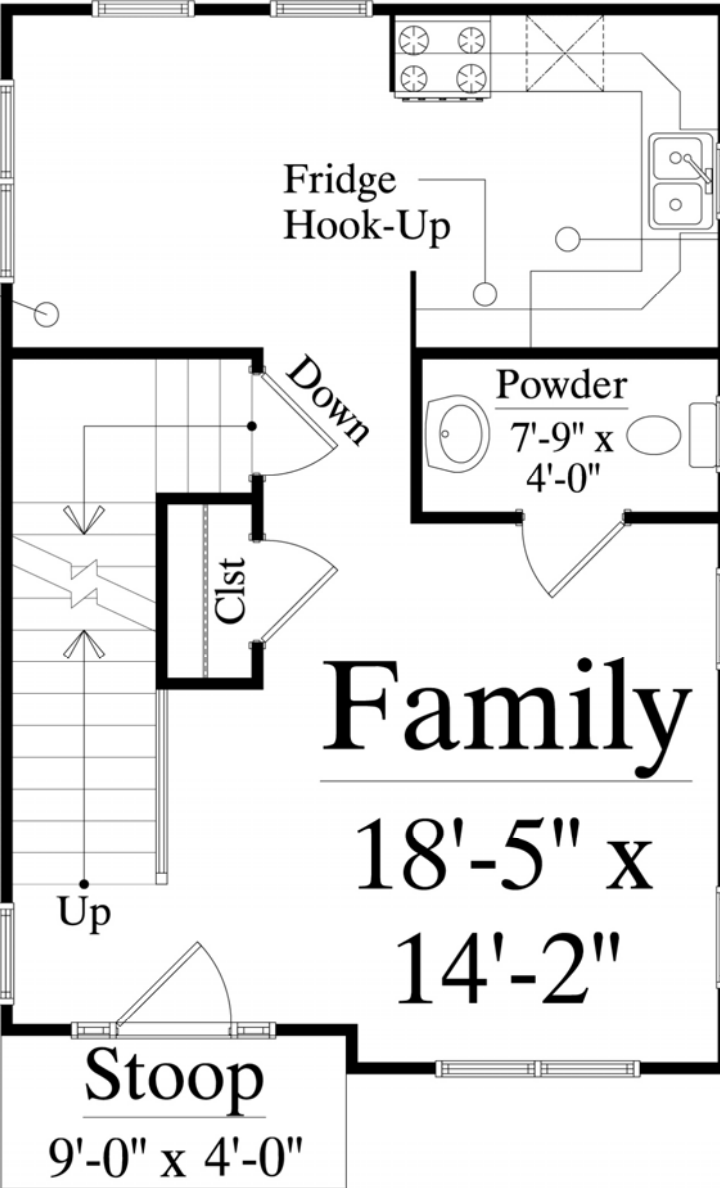
Powder
 7'-9" x
 4'-0"

Opt.
 Std. Window
 Opt. Dbl Wind.

Family
 18'-5" x
 14'-2"

Opt.
 Window

Stoop
 9'-0" x 4'-0"



Subject To Change Without Notice
 © 2016 Sunny Morning Homes All Rights Reserved
 During Construction Minor Changes May Occur
 Revised 2/23/2016

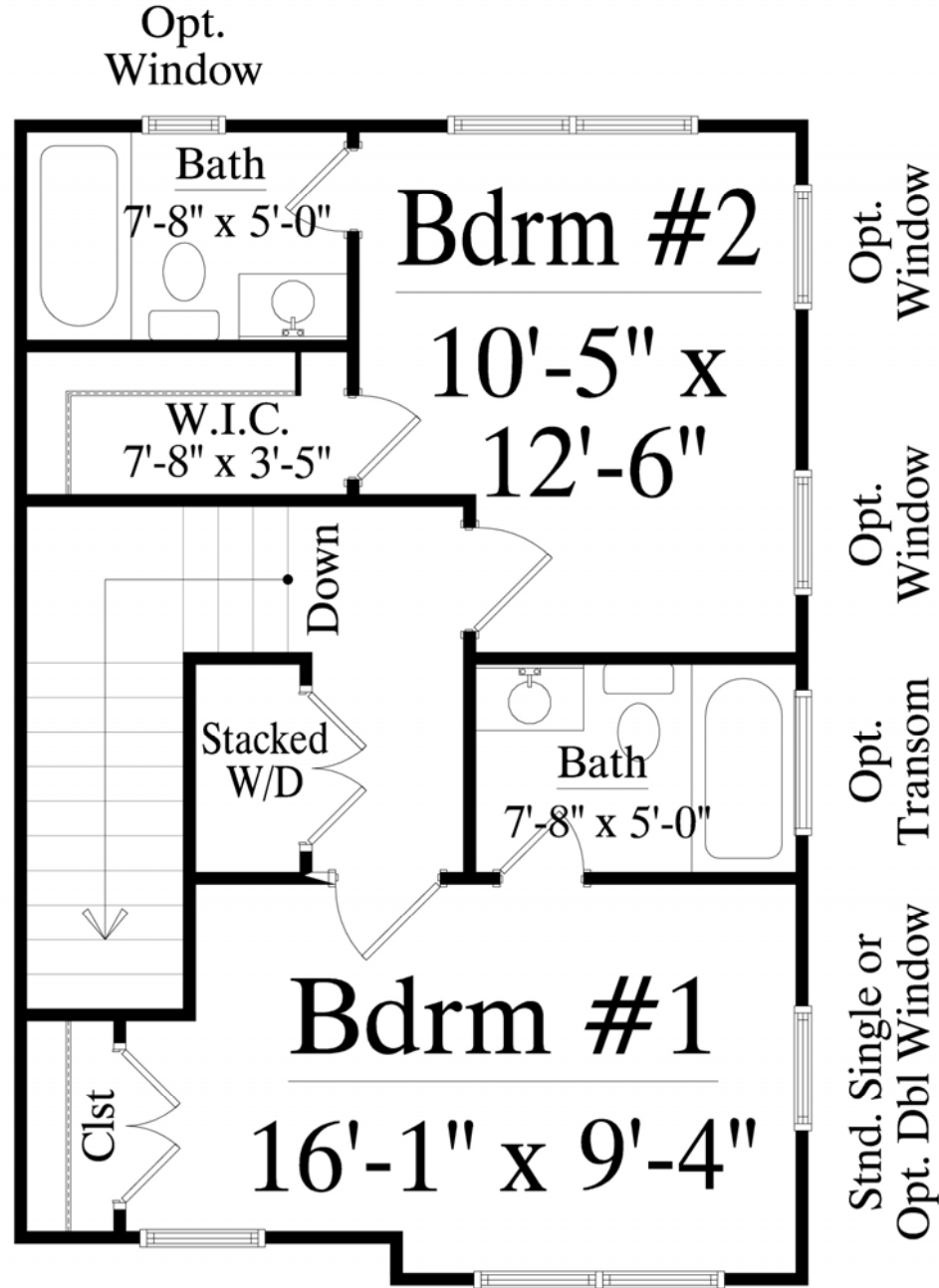
Building Dimensions:
 W = 19'-0" D = 28'-0"

SUNNY MORNING
HOMES

2nd Floor Sq.Ft. Shown Below
 523 Total Square Feet of which
 469 S.F. is Living Space
 54 S.F. is Open Space
 (Architect's Estimate)

Mary

(S1)



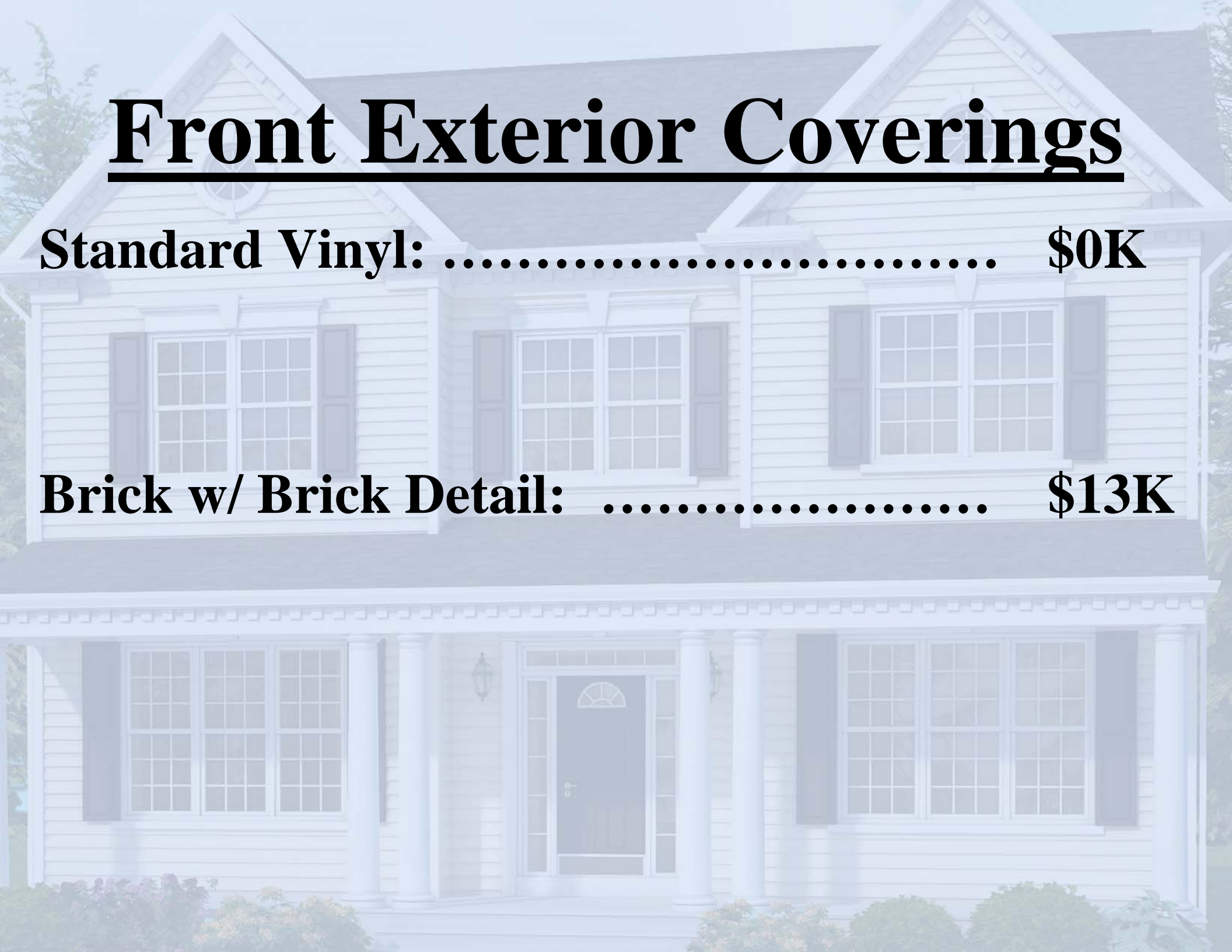
Subject To Change Without Notice
 © 2016 Sunny Morning Homes All Rights Reserved
 During Construction Minor Changes May Occur
 Revised 2/23/2016

SUNNY MORNING
 HOMES

Front Exterior Coverings

Standard Vinyl: \$0K

Brick w/ Brick Detail: \$13K





Sunny Morning Homes



Shown w/ opt wide stoop steps

\$0K

Artist's Best Guess Rendering
Minor Changes May Occur During
Construction
Subject to Change without Notice

**The Mary
Standard Elevation**



Sunny Morning Homes



Shown w/ opt wide stoop steps

The Mary
1st Upgrade Elevation

\$7K

Artist's Best Guess Rendering
Minor Changes May Occur During
Construction
Subject to Change without Notice



The Mary
2nd Upgrade Elevation

Shown w/ opt wide stoop steps

\$11K

Artist's Best Guess Rendering
Minor Changes May Occur During
Construction
Subject to Change without Notice



Sunny Morning Homes



Shown w/ opt wide stoop steps

The Mary
2nd Upgrade Elevation
Shown w/ Brick

**2nd Upgrade
Elevation**

\$11K

**As shown
w/ Brick**

\$24K

Artist's Best Guess Rendering
Minor Changes May Occur During
Construction
Subject to Change without Notice